

STACK-IT Update News

March 2011



**Copyright
1992-2007**

**ALL RIGHTS
RESERVED**

VERSION

7.8

**ADVANCED
MANAGEMENT
SYSTEMS, INC.**

Copyright © 2011 by
ADVANCED MANAGEMENT SYSTEMS, INC.

Greetings,

Here is a taste of what this Update delivers:

- On-Screen Digital Protractor
- Build - Quick Increment/Decrement Elevation
- View - Copy Selection Summary
- Radial Flat Pattern Page Object
- Tally - Line Item Total Visibility
- Data Grid - Pipe ID/OD
- Manual Part Refreshing
- Print Layouts - Expanded Font Size Selections
- Adjustment Position - New Exclusion Option
- Incremental Part - Product Code Extension
- Factory Option - Custom Doghouse Flair

Get additional 'live' information on selected new features by visiting us at: www.stackit.net/support/video

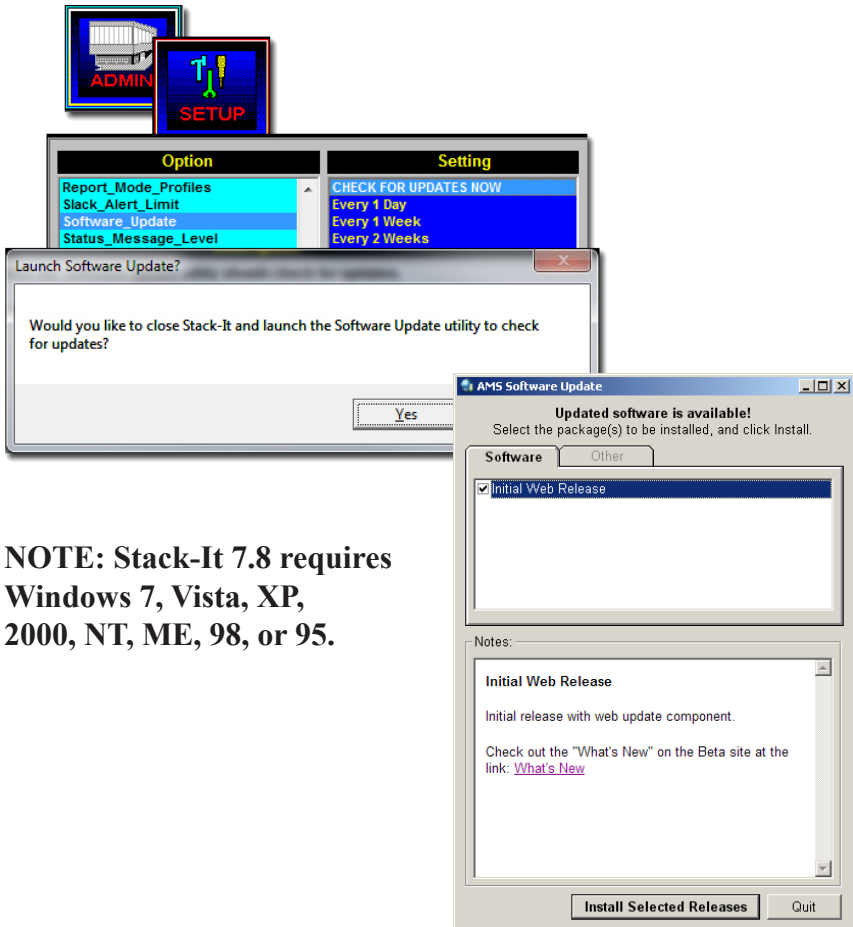
Enjoy,

Les Music
and the
Stack-It Development Team

Update Installation

Automatic Software Update

1. Open the SETUP screen in STACK-IT.
2. Select **Software_Update**
3. Select **Check for Updates Now**
4. Click **Yes** to begin the update
5. Click **Install Selected Releases**
6. When the update is complete, click **Close**



NOTE: Stack-It 7.8 requires Windows 7, Vista, XP, 2000, NT, ME, 98, or 95.

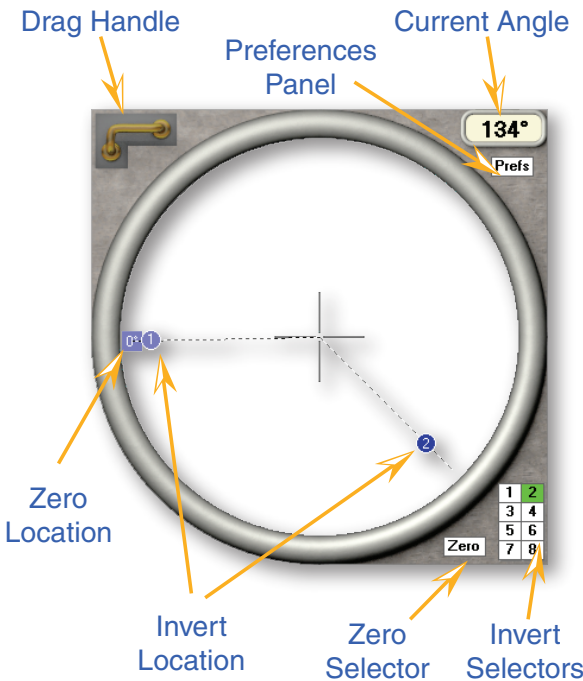
Simply use your mouse to place the protractor over the plan image and move the invert indicators. The angles are transferred to your BUILD screen instantly as you operate the protractor.

When you return to a structure later, the protractor will automatically update to reflect the current angles in the structure. Checking a structure or updating when the customer makes a change is clear and quick.

You can place the protractor over CAD drawings, PDF files, as well as a wide range of viewers used with downloaded plan files.



Click the new angle button on the BUILD screen to open ProTrac. Click on the button again to close ProTrac.



Move

Drag the handle to move the protractor to a structure.

Select

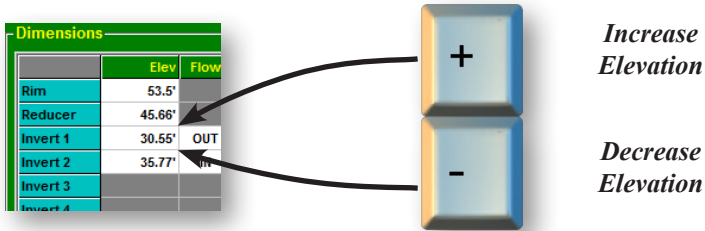
Click selectors for an invert or zero. Multiple inverts can be selected for lift stations.

Set

Click on the ring to set the angle for the selected inverts.

Build - Increment/Decrement Elevation

When the Elevation field is selected on the BUILD screen Dimensions panel, pressing the plus or minus key on the keyboard will increase or decrease the current elevation by 0.1 foot.

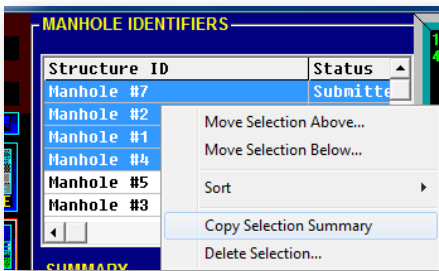


*Increase
Elevation*

*Decrease
Elevation*

View - Copy Selection Summary

Selecting one or more structures in the grid on the VIEW screen and then right-clicking on the grid now offers a new menu item to “Copy Selection Summary”. This will copy summarizing information about each structure. Specifically: structure ID, size, type, rim-to-invert height, total weight, and total price.



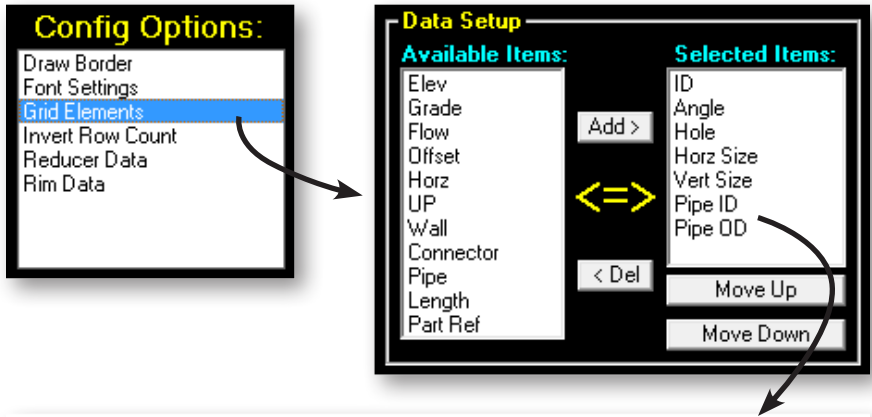
Copy from STACK-IT

Paste to Excel, Word, & More

Structure ID	Size	Type	Rim-Inv	Weight	Price
Manhole #7	60"	Type 2 Reducing	22.95'	26803.491lb	3242.4664
Manhole #2	30" x 20"	Area Inlet	4.45'	2370lb	588.25
Manhole #1	48"	Type 1 Sanitary	4.45'	6027lb	571.5
Manhole #4	60"	Type 2 Reducing	23.12'	33427.126lb	3704.4402

Data Grid - Pipe ID/OD

The Data Grid page object can now be configured to include the ID/OD of the pipe used on each invert. This can be activated under the Config Option labeled “Grid Elements” by adding the “Pipe ID” and/or “Pipe OD” to the Selected Items list.



Position	ID	Angle	Hole	Horz Size	Vert Size	Pipe ID	Pipe OD
Invert 1	1	45°	24.5"	22.324", 12.324"	24.5"	18"	23"
Invert 2	2	270°	11.5"	11.5"	11.5"	10"	10.5"
Invert 3	3	200°	11.5"	12.238"	11.5"	10"	10.5"
Invert 4							
Invert 5							
Invert 6							
Invert 7							
Invert 8							

Manual Part Refreshing

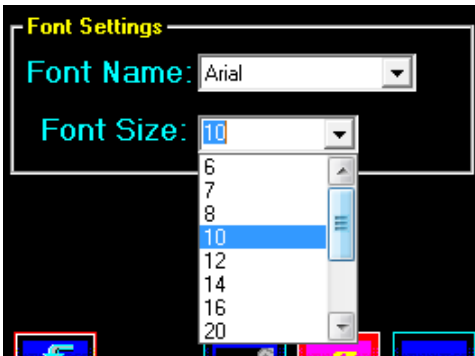
Two frequently requested enhancements are related to the updating of manually stacked parts. Previously, when parts of a structure were manually controlled (via the STACK Expanded screen), those parts were frozen in time. Any changes in STOCK would not apply to manual parts, unless the parts were reset from the “Manual” stack mode to “Automatic”.

The first enhancement applies when a part locked in “Manual” has price or cost changes made in STOCK. Now, re-stacking the structure will update the part with the latest price and cost values and still leave the part locked in the “Manual” mode.

The second enhancement applies when a part locked as “Manual” has physical dimensions changed in STOCK. Now, re-stacking the structure will change the part back into the “Automatic” stacking mode and will adjust the structure to account for any effect the dimensional changes may require.

Report Layout Font Enhancement

All report layout font selectors now have an expanded list of font sizes and allow for entering additional size selections.



Adjustment Position - Exclusion Option

When the adjustment position is active, the BUILD screen has a new option allowing the adjustment part position to be omitted on the fly. It is easy to suppress the inclusion of adjustment parts for specific cases without the need to create additional relationships.

Auto-Select - is the default and performs the standard adjustment processing.

None - Suppresses adjustment position processing and leaves out adjustment parts. This may result in a different structure, depending on the Relationship for the structure.

Components				
	Part	Height	Gasket	Steps
Rim 1	R&C (NF)	Auto-Select		
Adjust	Grade Rings	Auto-Select	None	
Top 1	Cone Concentric	Auto-Select	Profile	NO
		None		
Stack	Riser		Profile	NO
Reducer	Reducing Slab		Profile	NO

Incremental Part - Product Code Extension

A new ProdCodeIncr option for incremental part styles has been added that appends the overall height of the part using an integer digit and up to two decimal places (e.g., 4, 4.5, 4.75).

Specifications	
ProdCode	IB602
ProdCodeIncr	TOT-HT-0.00
Price	432
PriceIncr	24
Cost	0
CostIncr	0
Weight	3100lb

(none)

HEIGHT

HEIGHT-3

NUMBER

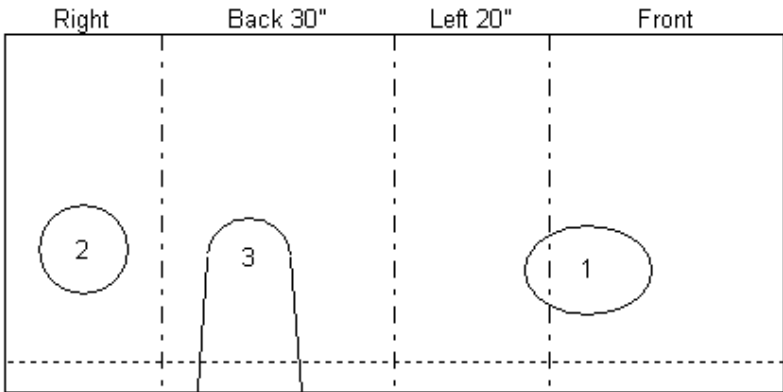
TOT-HT-0.00

TOT-HT-2

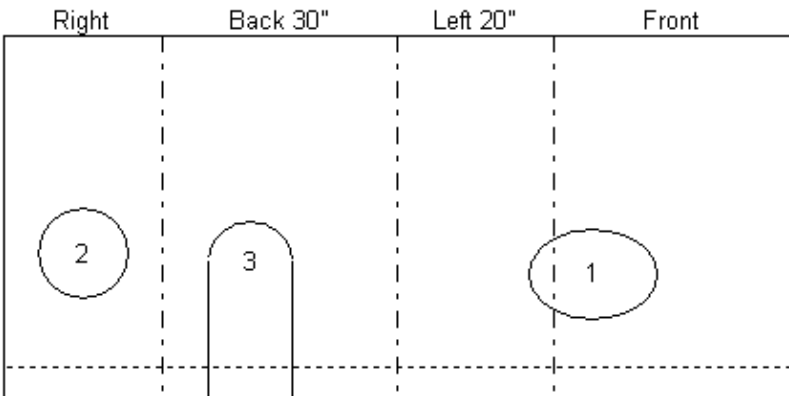
Custom Doghouse Flair

A factory option has been added that specifies the amount that a doghouse cutout is flared. This option affects the drawing of Doghouse and Doghouse_Inverted connector styles. It has no effect on the structure stacking.

If you would like to have this option customized for your situation, let us know.



Standard Flair = 0.25



Custom Flair = 0

SEND US YOUR FEEDBACK!

You can submit your comments by e-mail for direct entry to our development process. The feedback address is:

feedback@a-m-s-inc.com

AMS ON-LINE

Be sure to visit our web site for the latest news about upcoming developments of the STACK-IT Estimating System.

www.stackit.net

A Customer Focused Corporation



ADVANCED MANAGEMENT SYSTEMS, INC.

P.O. Box 3611

Federal Way, WA 98063-3611

253-927-8520